

# Repkord

## Installing RepBox Premium Upgrade kit

Written By: William Youngman

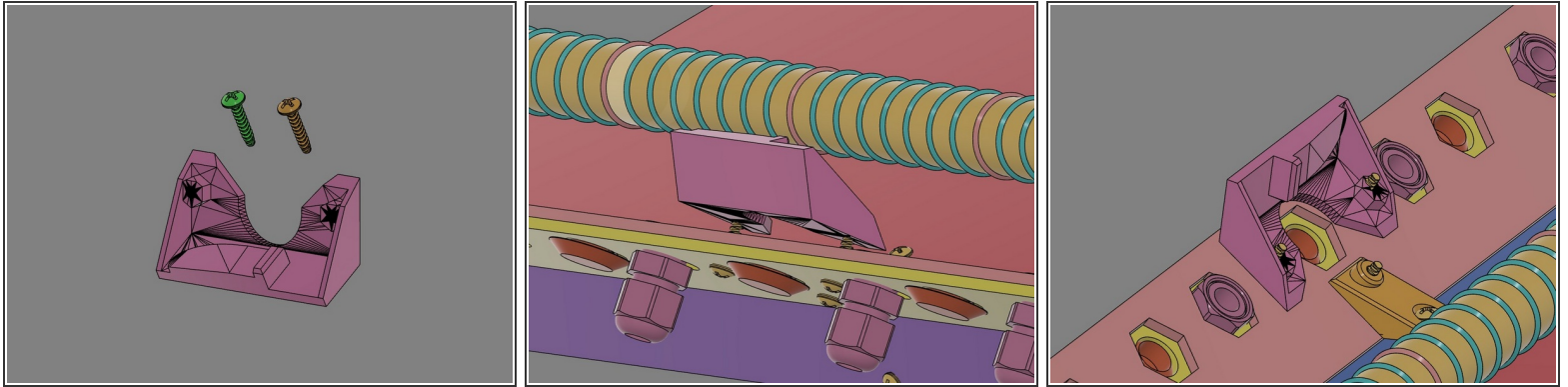




## TOOLS:

- [Phillips Head Screwdriver](#) (1)
- [Flush Cutters or Scissors](#) (1)
- [Level](#) (1)
- [Power Screwdriver / Drill](#) (1)

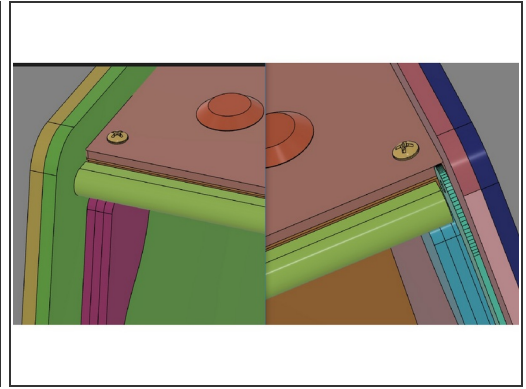
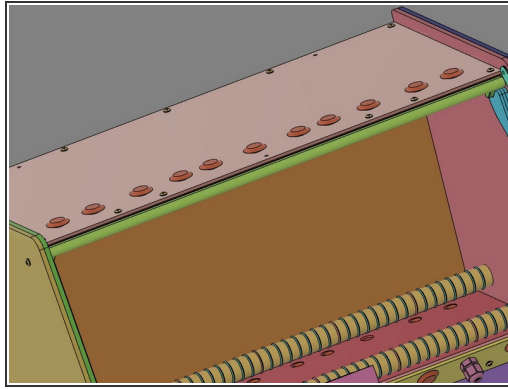
## Step 1 — Install the Latch Plate



 Do Not Use Power Tools for assembly.

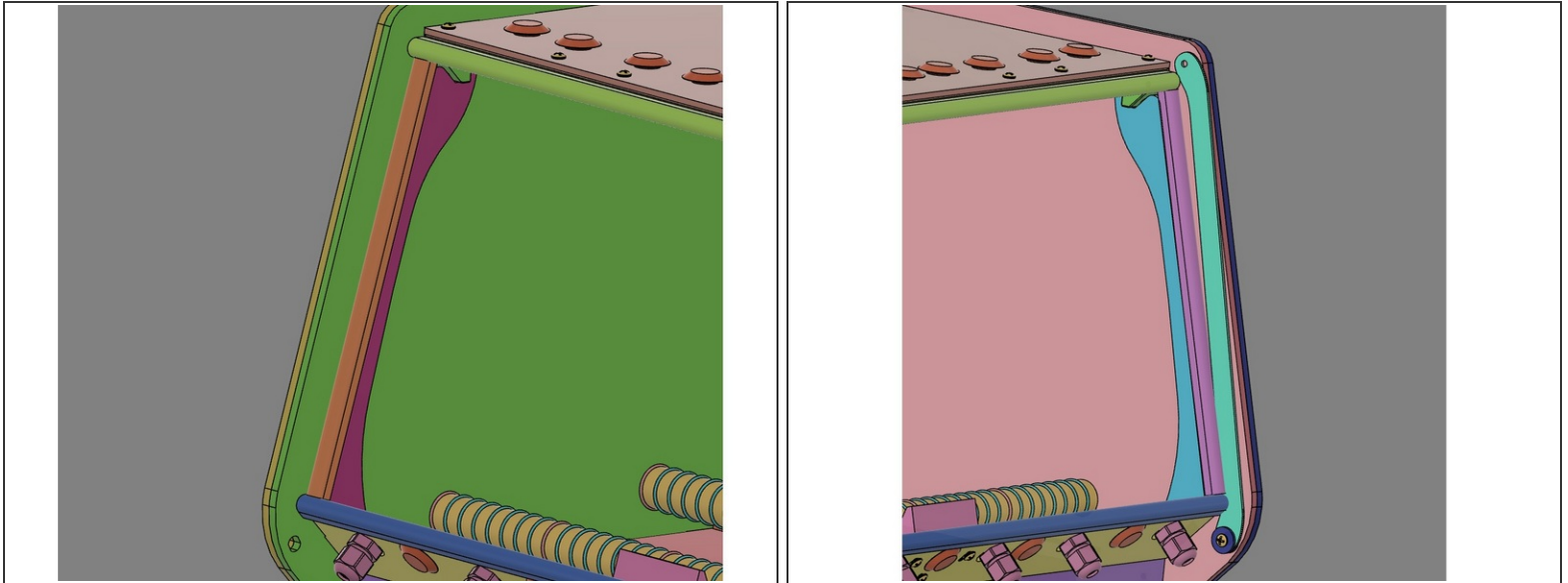
- **IMG 1** - Locate the *Latch Plate* and x2 *16mm TF Screws*.
- **IMG 2** - The *16mm TF Screws* will pass through the two empty holes at the center of the *Front Exit Panel* and into the *Latch Plate*
- **IMG 3** - Look inside the RepBox to ensure the *Latch Plate* is oriented properly.

## Step 2 — Install Gasket Seal (Horizontal)



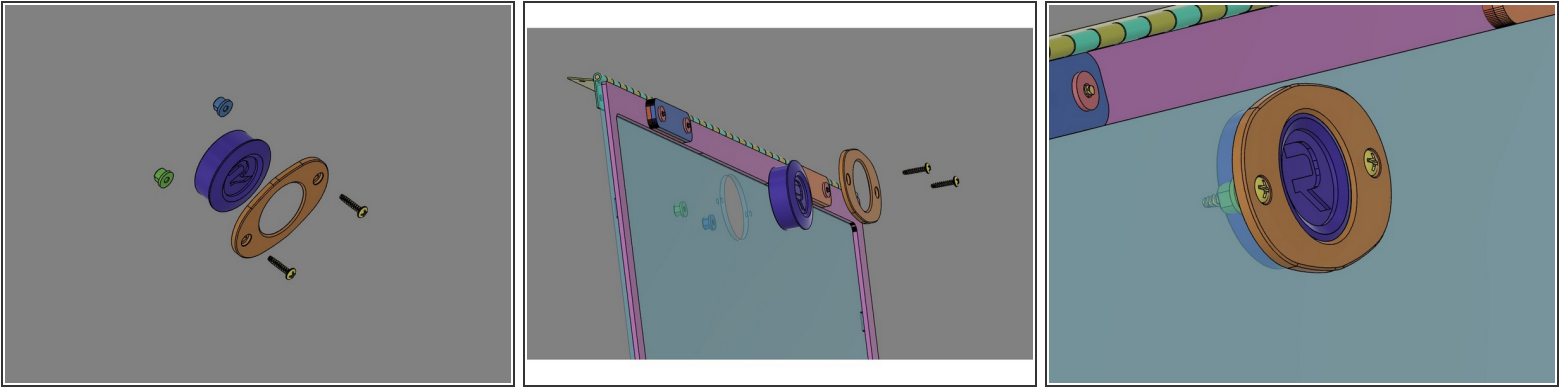
- **IMG 1** - The *Gasket Seal* will need to be cut into four pieces; x2 *Horizontal* and x2 *Vertical*.
  - **IMG 2** - This image shows the Top Seal installed.
  - **IMG 3** - To determine the length of this *Gasket Seal*, use the RepBox as a guide. On the side **without** the *Lid Prop*, the gasket should be flush against the inside. On the side **with** the *Lid Prop*, it should flush against the *Lid Prop* minus ~1mm.
- ⓘ Repeat this process for the Lower Seal.

### Step 3 — Install Gasket Seal (Verticle)



- **IMG 1** - This image shows one of the Vertical Seal installed.
- The Vertical Seal should fit flush within the two Horizontal Seals.
- **IMG 2** - Repeat the process for the other Vertical Seal.

## Step 4 — Install Hygrometer

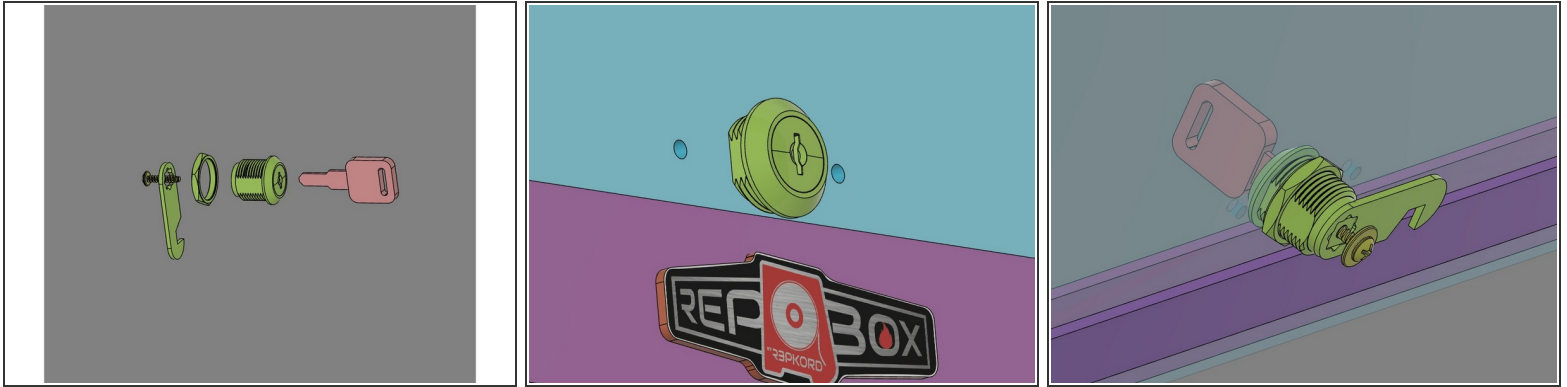


**⚠ Do Not Use Power Tools for assembly.**

- **IMG 1** - Locate x2 *Flange Nuts*, x1 *Hygrometer*, x1 *Lid Trim Clamp* and x2 *16mm TF Screws*.
- **IMG 2** - The *Hygrometer* is installed from the outside of the Lid Assembly. The *Lid Trim Clamp* then covers the *Hygrometer*. The *16mm TF Screws* are inserted through *Lid Trim Clamp* and the Lid Assembly.
- **IMG 3** - Secure the *16mm TF Screws* using the x2 *Flange Nuts*.

**⚠ Do not over tighten these screws.** They should be just tight enough to secure the *Hygrometer* from rotating.

## Step 5 — Install the Lockset

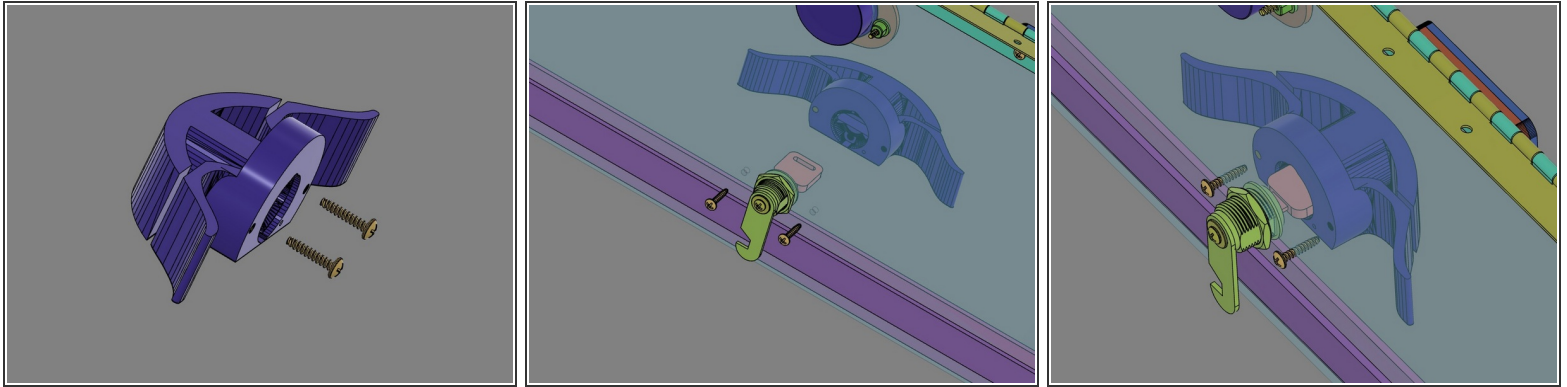


**⚠ Do Not Use Power Tools for assembly.**

- **IMG 1** - Locate the *Lockset* hardware.
- **IMG 2** - Insert the Body of the *Lockset* through the hole in the *Lid*. Orient the Body so it aligns with the flat-side of the opening (as shown).
- **IMG 3** - From the inside of the *Lid*, install the *Lockset* Nut to secure the Body. Insert the *Lockset* key into the Body and rotate it **clockwise** until it stops.
- **IMG 3 cont.** Install the *Lockset* Latch Plate (as show) and secure it with the *Lockset* Screw.

**⚠ Verify the orientation of the Latch Plate and the Key (as shown).**

## Step 6 — Install the Handle

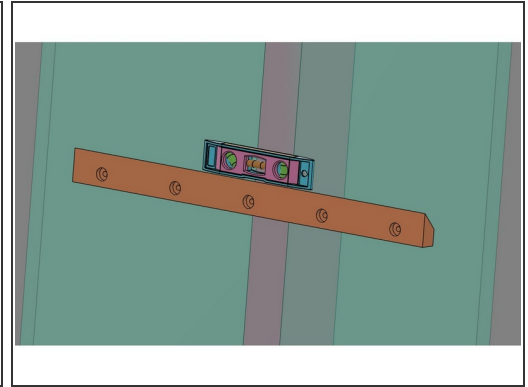
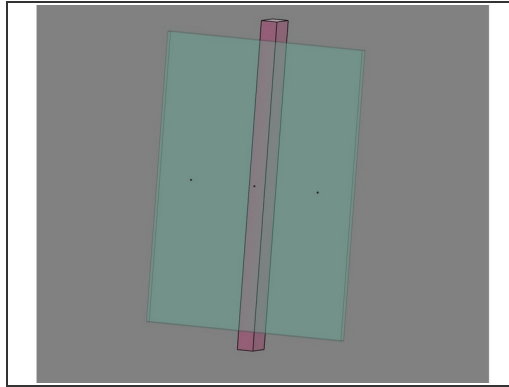
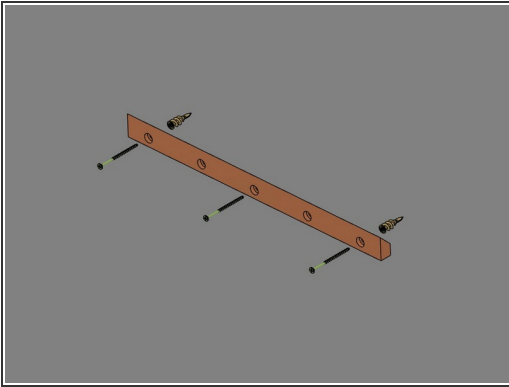


 Do Not Use Power Tools for assembly.

- **IMG 1** - Locate the *Handle Set* and x2 *16mm TF Screws*.
- **IMG 2** - Rotate the *Lockset Key* counter-clockwise until it stops. Verify the Key and Latch Plate are in the proper orientation (as shown).
- **IMG 3** - Slide the *Handle Set* onto the Key. The *Handle Set* should slide down the Key flush against the *Acrylic Lid*. Use the x2 *16mm TF Screws* to secure the *Handle Set*.



## Step 7 — Install the Wall Mount (Part 1)



- **IMG 1** - Locate the *French Cleat*, x2 *Wall Anchors* and x3 *3" Screws*.

**i** This hardware pack contains x1 spare *Wall Anchor*.

- **IMG 2** - Identify a location that has at least one stud. It is preferred to locate the *French Cleat* so it is centered on the stud.

**i** The outer holes of the *French Cleat* are spaced apart 16" on center, so it is possible to mount the *French Cleat* to two studs (one on each end). **This is best if possible.**

- **IMG 3** - Use the *French Cleat* to pre-mark the wall for the next step.

**⚠** Please use a level to ensure the *French Cleat* is level before making these pre-marks.

## Step 8 — Install the Wall Mount (Part 2)

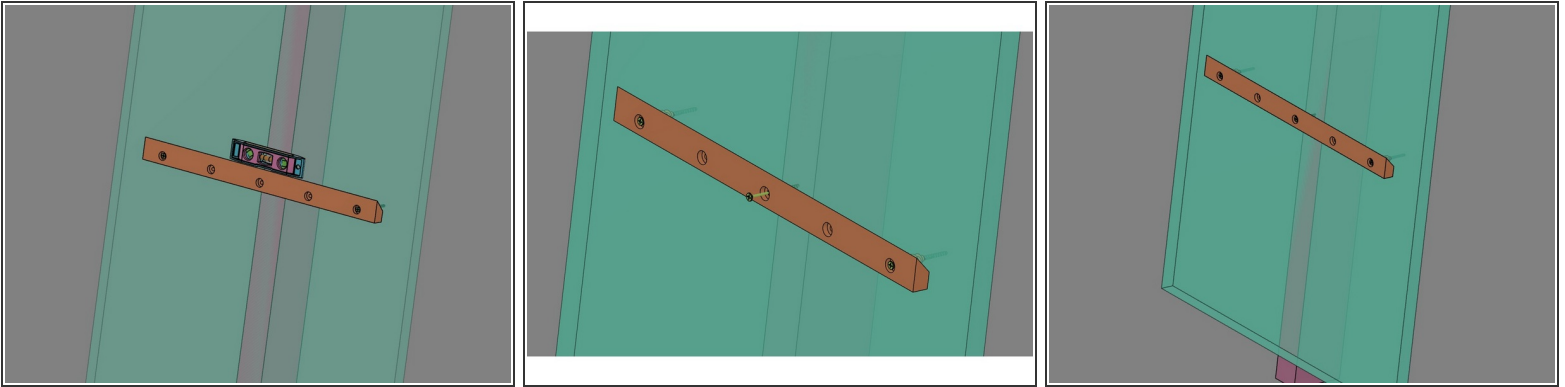


**⚠ Do Not Use Power Tools for assembly.**

- **IMG 1** - Please read and follow these instructions for installing the *Wall Anchors*.
- **IMG 2** - Install the x2 *Wall Anchors* into the pre-marks made in the previous step.
- **IMG 3** - Align the *French Cleat* with *Wall Anchors* and install the *3" Screws*.

**⚠ Do not fully tighten these screws yet. Bring them down flush**

## Step 9 — Install the Wall Mount (Part 3)



- **IMG 1** - Re-level the *French Cleat* and secure the screws into the *Wall Anchors*.

⚠ **Make sure the *French Cleat* is level before moving to the next step.**

- **IMG 2** - Insert the *3" Screw* through the *French Cleat* and into the stud, then secure it.

ⓘ If you would like to pre-drill a hole for the *3" Screw* going into the stud(s), please do this now. This hole should be no larger than 7/64th (2.5mm).

## Step 10 — Slice Engineering Desiccant



- These desiccant canisters can be inserted directly into the filament spools before loading them into the RepBox OR they can be placed inside the front exit panel laying on their side.

