

Repkord

The Bento Box.

Written By: William Youngman

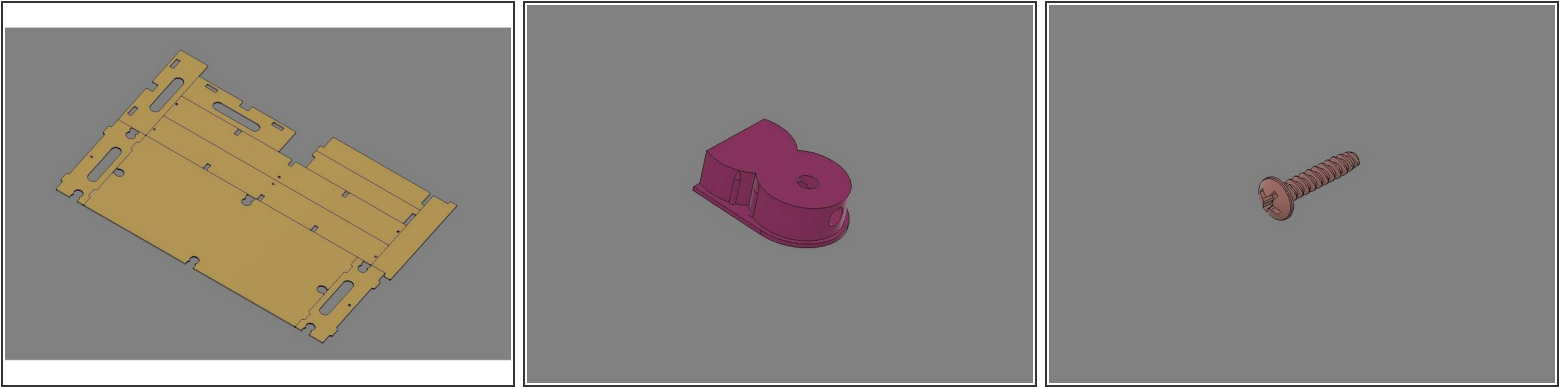




TOOLS:

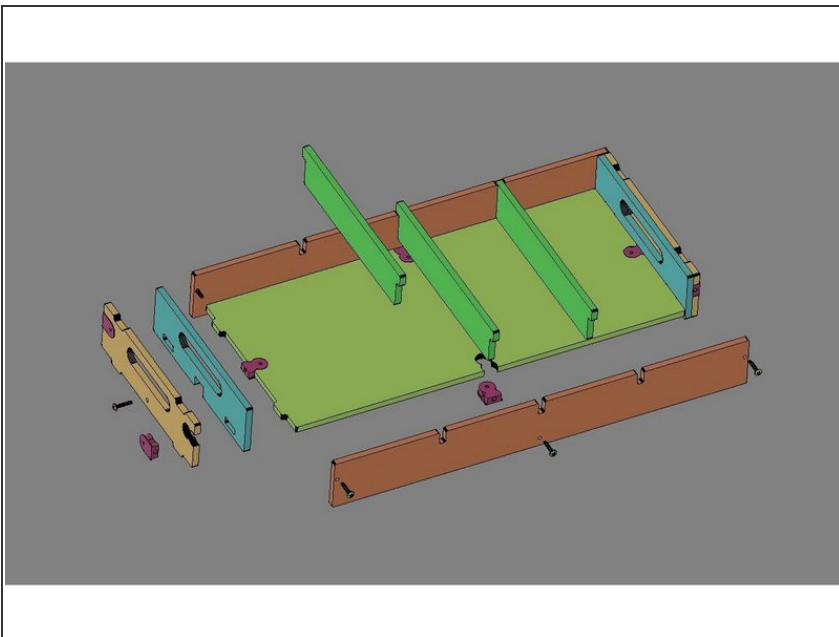
- [Phillips Head Screwdriver](#) (1)
 - [Clean & Flat Surface](#) (1)
-

Step 1 — The parts provided in the kit.



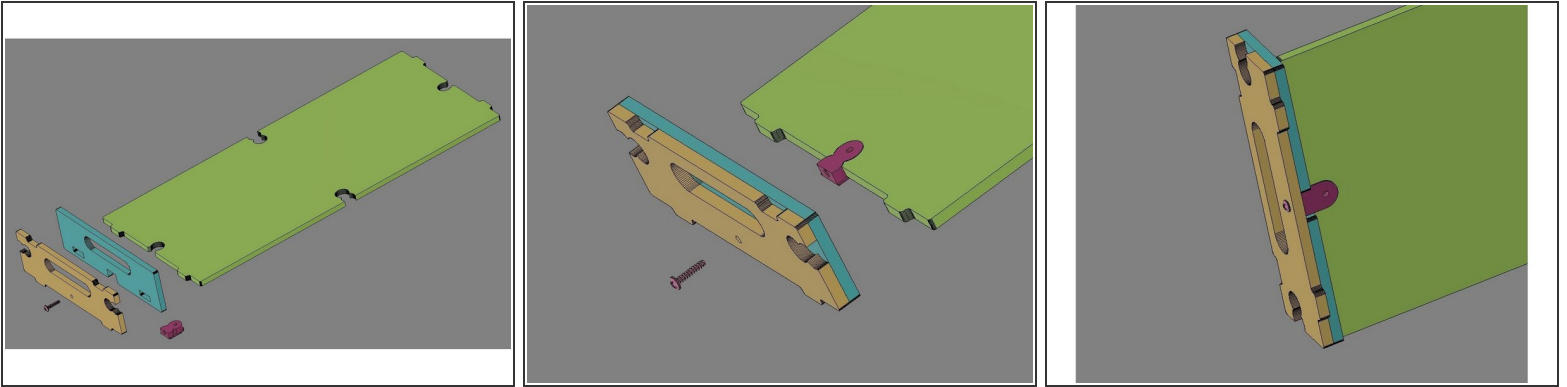
- **IMG 1** - x1 *Sheet of laser cut parts.*
- **IMG 2** - x8 *Flush Anchor.*
- **IMG 2** - x8 *16mm TF Screws.*

Step 2 — Basics of Assembly



- **IMG 1** - This is a basic overview of the parts and assembly structure for the Bento Box.
- There are few ways to assemble the Bento Box. These instructions are just one of them.

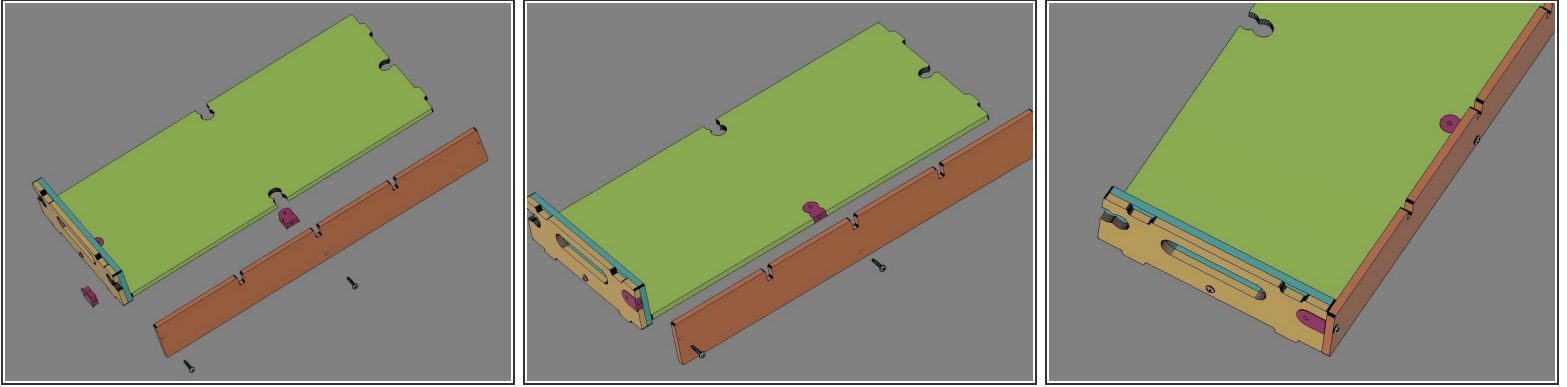
Step 3 — The first few pieces.



 Do Not Use Power Tools for assembly.

- **IMG 1** - Locate the *Base*, x1 *Inner Side*, x1 *Outer Side*, x1 *Flush Anchor* and x1 *16mm TF Screw*.
- **IMG 2** - Insert the *Flush Anchor* into the *Base*. Then stack the *Side Outer* on top of the *Side Inner*.
- **IMG 3** - Align this Side Stack with the tabs of the *Base*. Insert a *16mm TF Screw* through the Side Stack and into the *Flush Anchor*; secure them together, but do not fully tighten them yet.

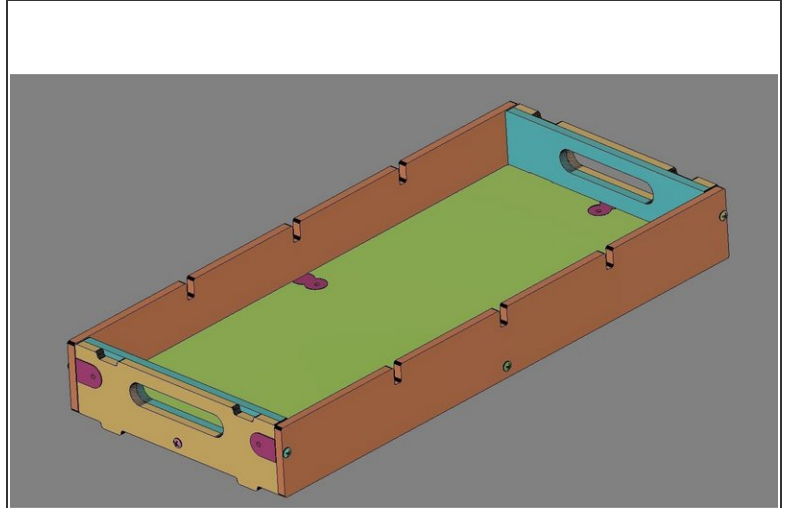
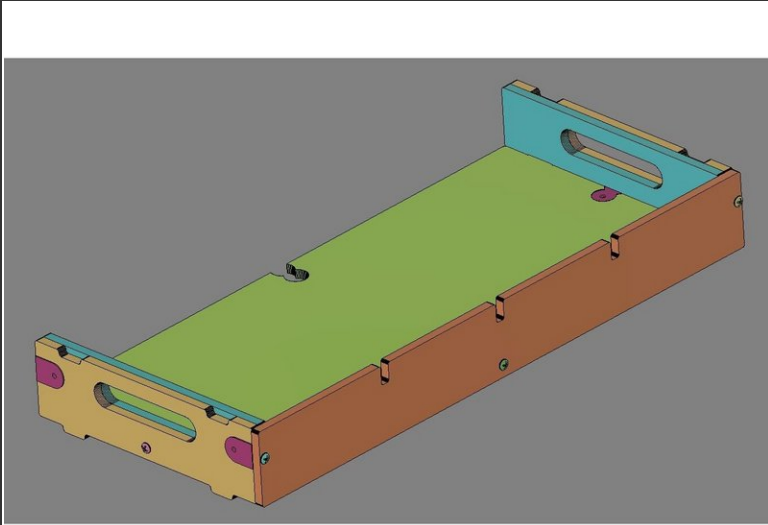
Step 4 — Attach the first Front Panel.



 Do Not Use Power Tools for assembly.

- **IMG 1** - Locate x1 *Front Panel*, x2 *Flush Anchors* and x2 *16mm TF Screws*.
- **IMG 2** - Insert the *Flush Anchors* into the assembly; one into the *Base* (up from the underside) and the other into the *Side Outer* as shown.
- **IMG 3** - Align the *Front Panel* to the assembly using the x2 *16mm TF Screws*. These two screws should pass through the *Front Panel* and into the *Flush Anchors*. Secure the *Front Panel* but do not fully tighten the screws yet.

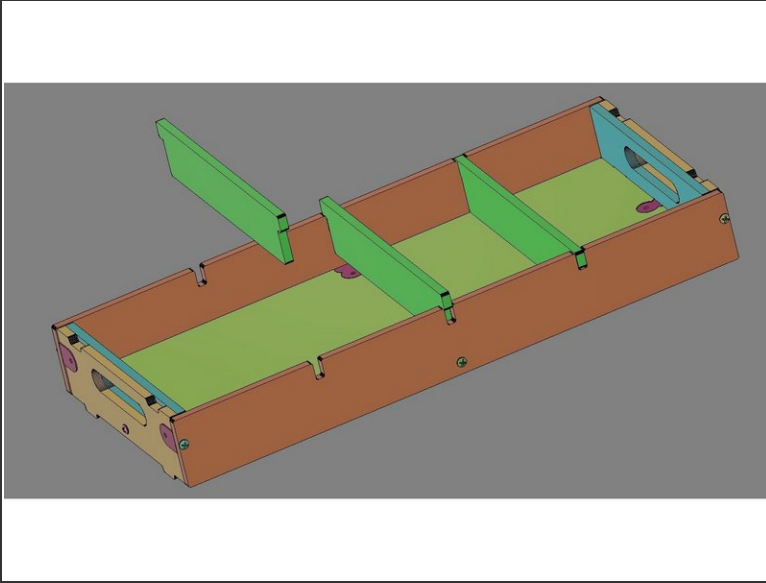
Step 5 — Finish the Box assembly.



 **Do Not Use Power Tools for assembly.**

- **IMG 1** - Repeat Step 3 on the far side of the assembly.
- **IMG 2** - Repeat Step 4 on the other side of the assembly.
- Set the completed Bento Box on a flat surface to help align all parts and ensure the Bento Box sets flat. Slowly finish tightening the screws until fully secure.

Step 6 — Insert the Spacer Ribs.



- **IMG 1** - The kit provides x3 *Spacer Ribs*. They are a slip-fit into the notches on the *Panels*.
- ① Repkord provides a few different printable Inserts free of charge for downloading at [Printables.com](https://printables.com).
- There's a low profile dish, a taller one for storing larger parts and one designed to secure three canisters of [Slice Engineering Activated Alumina Filament Drying Desiccant](#).