

Repkord

RepBox v2.5.x Build Guide 1: Pre-Build Preparation

Written By: Pooch



INTRODUCTION

This guide will provide assembly instructions for:

v2.5

v2.5.1

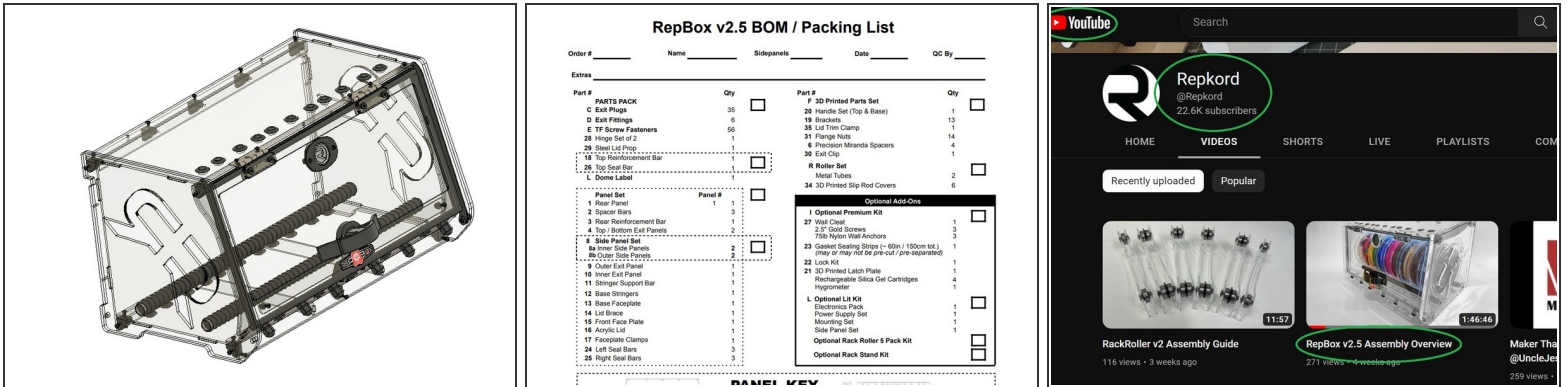
v2.5.2



TOOLS:

- [Phillips Head Screwdriver](#) (1)
 - [Flush Cutters](#) (1)
 - [Needle Nose Pliers](#) (1)
 - [SEE COMPLETE PARTS DETAIL SHEET AND BOM BELOW](#) (1)
-

Step 1 — RESOURCES



⚠ We highly recommend you use these three additional resources for the build:

- **Assembly Video:** <https://youtu.be/GhOFla803xQ>
- **Interactive CAD Model v2.5.0:** <https://repkord.com/RB2Model>
- **Interactive CAD Model v2.5.1:** <https://repkord.com/RB251Model>
- **Interactive CAD Model v2.5.2:** <https://repkord.com/RB252Model>
- **Bill of Materials** specific to the version being assembled.

Step 2 — Tools Required



- For this build you will need a phillips head screwdriver, flush cutters, and optionally some needle nose pliers.
- The printed Bill of Materials is very helpful to the assembly process.

Step 3 — Unboxing and Prep



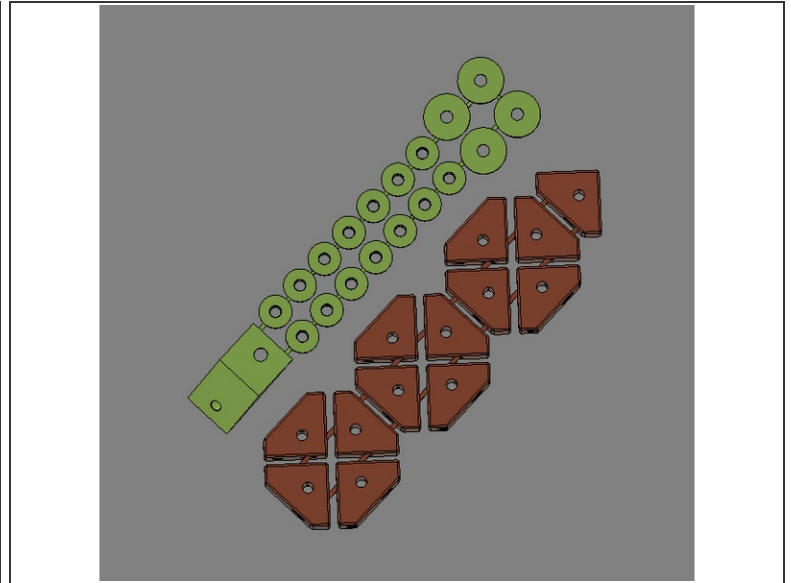
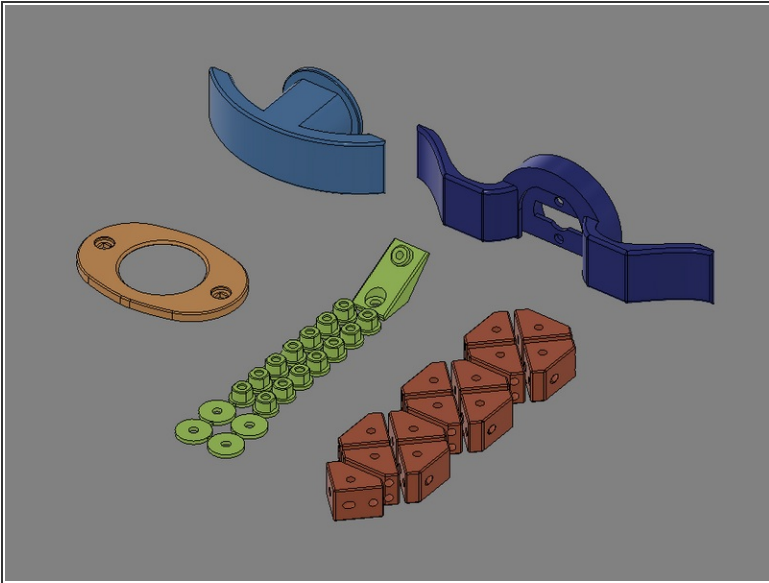
- Unboxing and prep associated with this build.

Step 4 — Removing The Protective Films



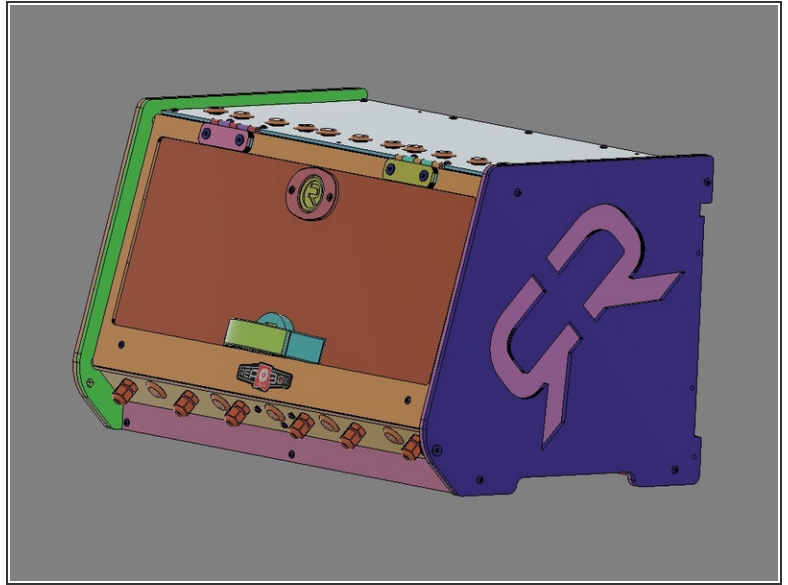
- ⚠ All clear acrylic panels come from the factory with a protective film on **BOTH SIDES** of the panel. Be sure to remove it all prior to assembly.
- ⓘ **NOTE:** The color of your protective film may be a different color than the clear you see here. This is normal. The acrylic underneath is still the same clear in the finished product.

Step 5 — Prepping the 3D Printed Parts Set



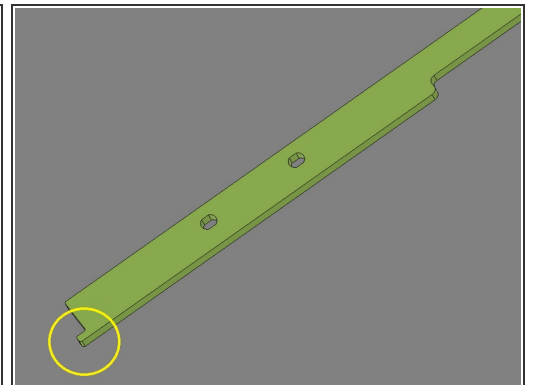
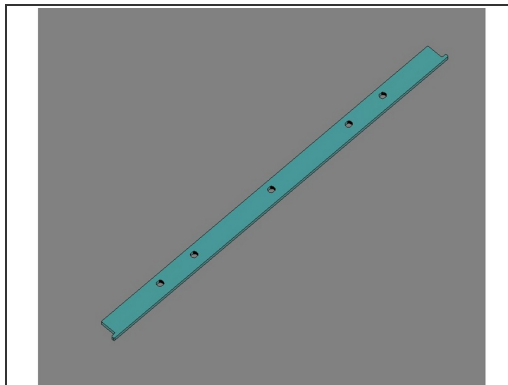
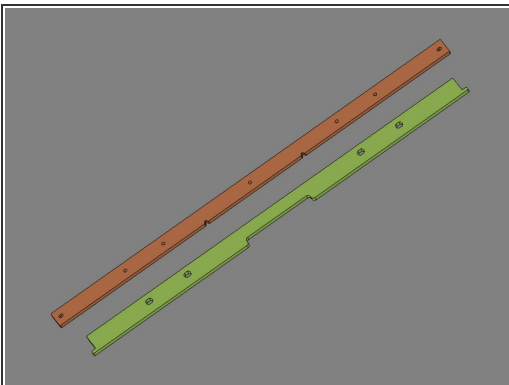
- i** The color of components included with the RepBox will vary based upon the 'flavor' purchased.
- **IMG 1** - Identify the six parts shown.
 - **IMG 2** - Locate these two part sets. Each part is connected with small strips to keep them from becoming lost.
 - You can separate these parts from the strips either by hand or trimming them clean with flush cutters.
- i** Suggestion: You can also leave the parts on the strips for the moment. Then just cut them loose right as they're needed.

Step 6 — Your Clear Acrylic RepBox.



- In the following instructions, all parts will be shown in a **contrasting color** to help distinguish one part from another during assembly. The actual parts included with the kit will be Clear Acrylic.
- **IMG 1** - RepBox shown in Clear Acrylic RepBox
- **IMG 2** - RepBox shown in **contrasting colors**.

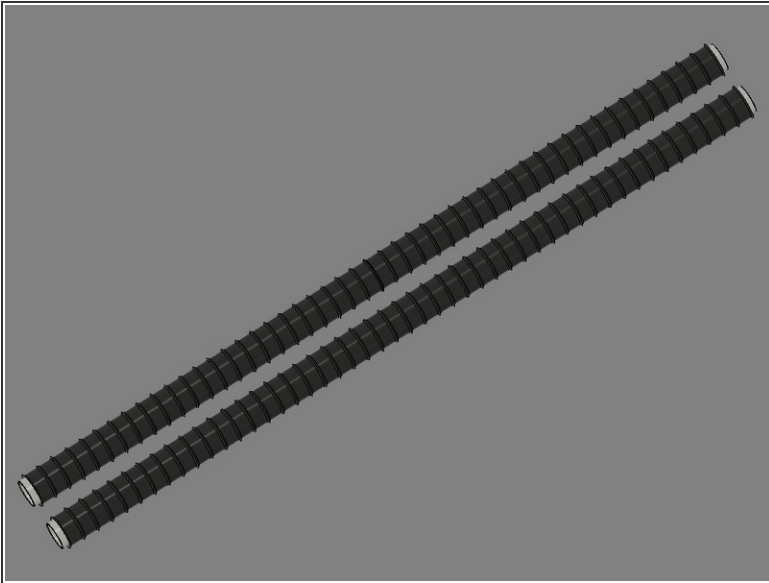
Step 7 — Unique parts in the Parts Tube.



- **IMG 1** - Both of these parts (Item 18 & 26) are included within the Parts Tube if you have **v2.5.0**
- **IMG 2** - This part (Item 26) is included within the Parts Tube if you have either **v2.5.1** OR **v2.5.2**.

⚠ In either case, do not cut off the tabs (circled in yellow) on either end of Item 26.

Step 8 — About The Slip Rods



REPKORD LET'S GET A ROLLIN'

HEY THERE! Your new RepBox comes equipped with our new "Slip Rod" system. It is designed so that you can easily move spools in and out of the box and reposition. For the majority of plastic spools you should have a nice slick surface for them to slip and slide on but we realize it's not the best setup for all the new spool materials we're starting to see out there. As such we've created a bunch of options for you to mount any kind of spool you want, now choose your own adventure:



Download and
Make My Own
Roller
Accessories
FREE on
Printables.com

BUY Some
Roller
Upgrades on
Repkord.com



- **IMG 1** - Your RepBox comes equipped with our new *Slip Rod* system. It is designed so that you can easily move spools in/out of the box and reposition them simply. For the majority of plastic spools you should have a nice slick surface for them to slip & slide on.
- **IMG 2** - Additional Spool and Roller options!