

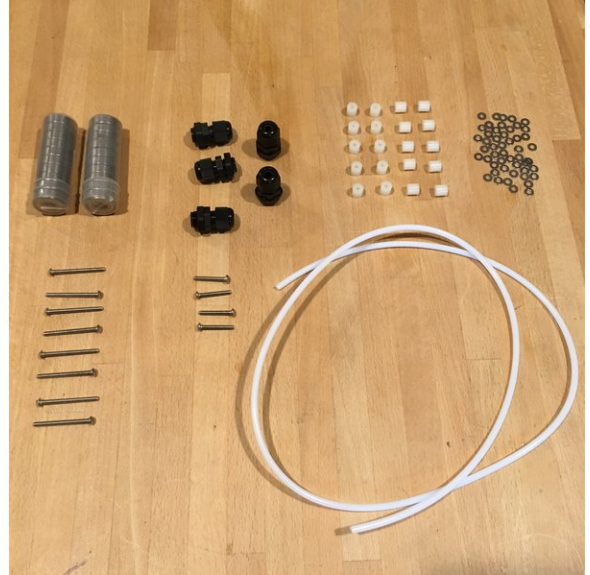
# Repkord

## STAGE 8 - Filament Roller Assembly

Written By: Pooch

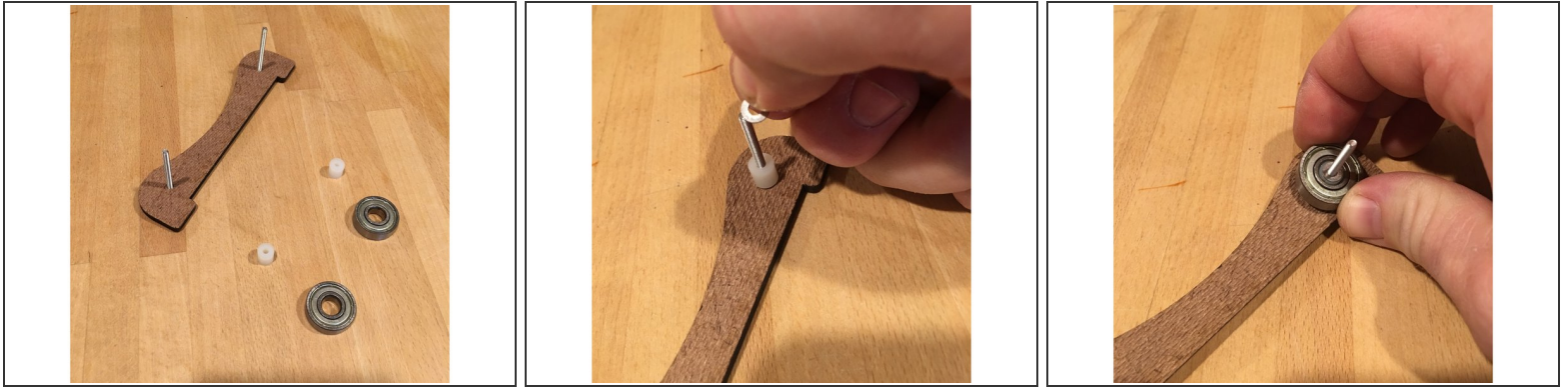


## Step 1 — Parts and Pieces



- Laser Cut Roller Sides
- Nylon Bushings
- Roller Bearings
- Long and short bolts for single wide and double wide rollers
- Nylock Nuts
- (Early Option) M3 Washers, replaced by longer bushings in later version

## Step 2 — Assembling the Dual Rollers



**i** If your kit includes metal washers, place one washer on to a bolt, followed by a nylon spacer, followed by another washer. Later kits utilize longer spacers that don't require washers. The point is to simply allow enough space between the roller sides for the bearing to spin.

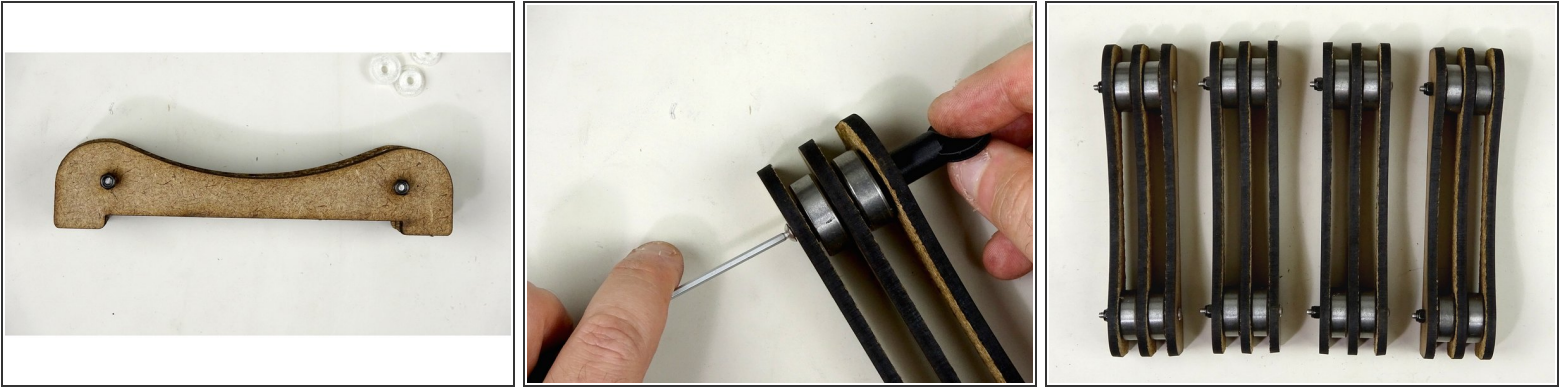
- Place nylon spacers on the bolts, followed by a bearing over top.
- Do this for both bolts.

## Step 3 — Dual Rollers Assembly Continued



- Place another laser cut roller side over the bolts.
- Repeat the process from step 2 in the same order based on what spacers your kit included

### Step 4 — Dual Roller Assembly 3



- Place another laser cut side over the bolts.
- Secure the bolts into place with nylock nuts.
- Repeat Steps 2-4 until you have 4 of these dual rollers built.

### Step 5 — Assembling the Single Roller



- The single roller assembly is just like the dual, except you cap off after a single row of bearings.
- Make sure you use the shorter of the bolts in the bag.
- You should have 2 single rollers and 4 dual rollers per kit. Additional rollers are available for purchase to expand your RepBox capacity on [www.repkord.com](http://www.repkord.com)

## Step 6 — DONE!



- Throw those rollers into the interior, placing the single wide rollers on the ends.
- DONE! Congrats! You've Just built a RepBox! **FIST BUMP!**
- Consider rewarding yourself with a life preserver shaped candy or similar treat.