

Repkord

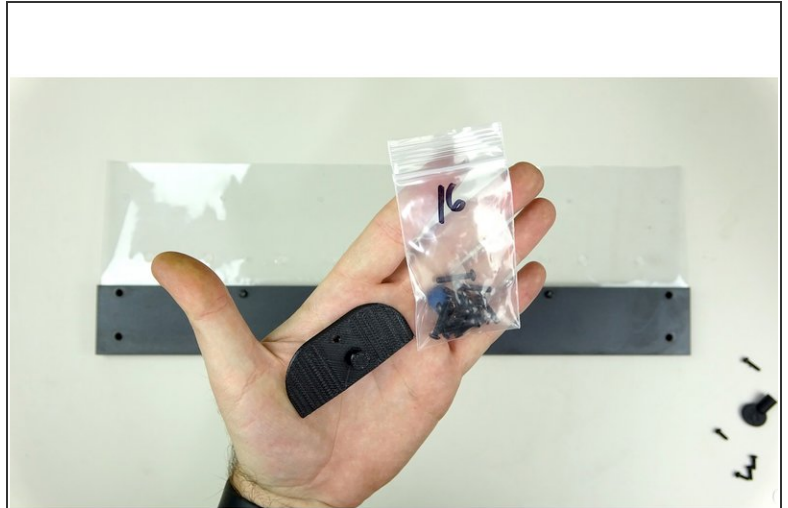
STAGE 1 - Bottom Front Assembly

Assembling the bottom front panels

Written By: Pooch

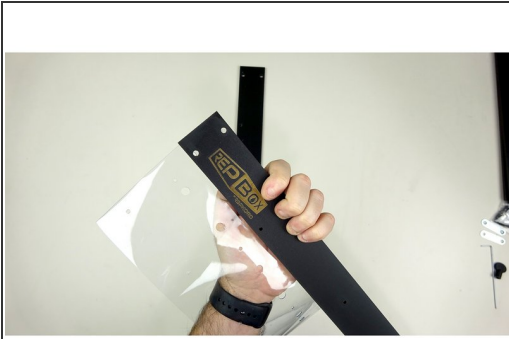


Step 1 — Parts and Pieces



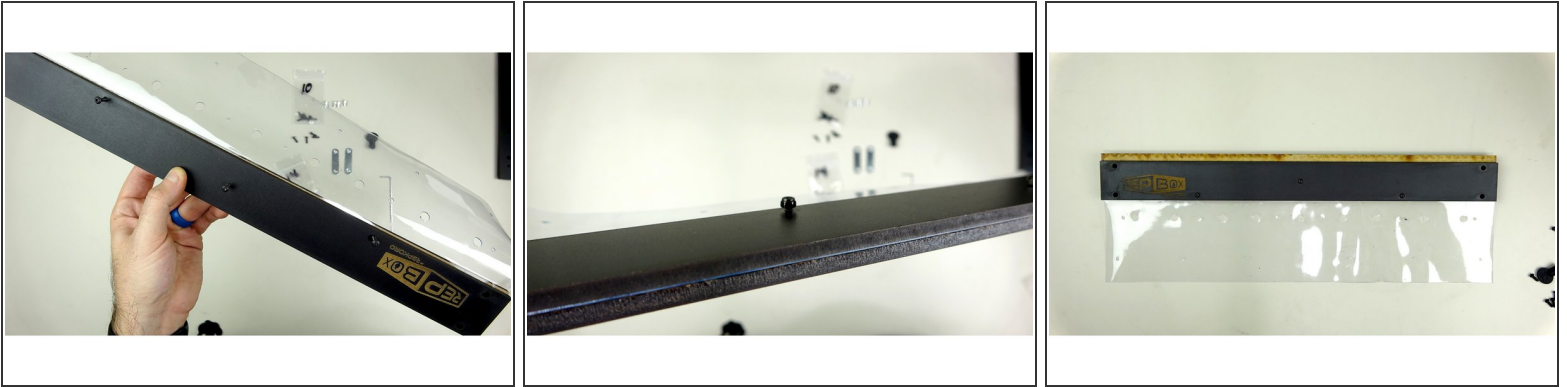
- Inner and Outer Face Plates (Seal Kit will have a larger Inner Face Plate)
- Inner and Outer Exit Plates
- Large Vinyl Hinge
- 14mm and 10mm Bolts
- Rivnuts and Nylock Nuts
- Metal Maglatch Plates
- Allen Wrench and 3D Printed Nut driver
- ① Seal Kit Parts: 3D Printed Strike Plate, 16mm bolt, Larger Inner Face Plate.

Step 2 — Arranging Inner and Outer Face plates



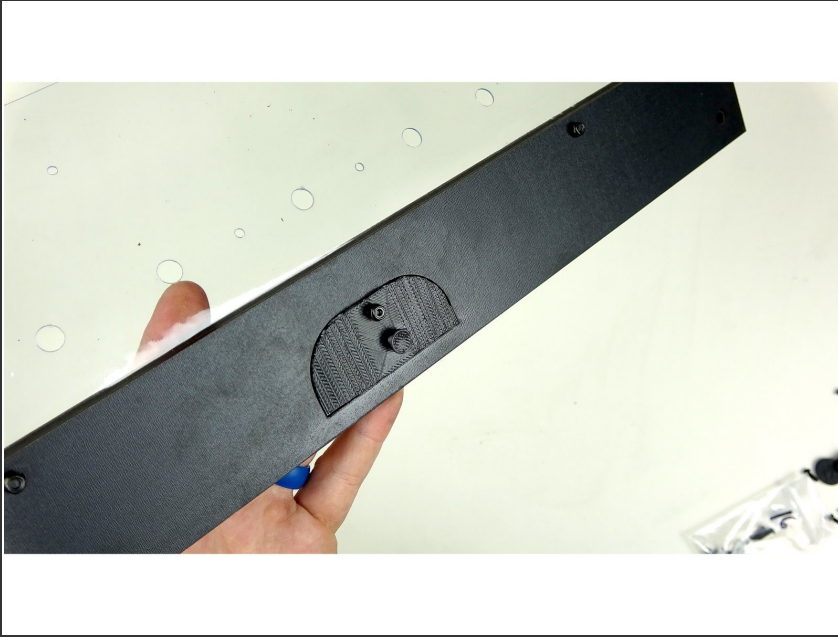
- Place the Outer Face plate (with Repkord logo) on **TOP** of the Large Vinyl Hinge as pictured. Make sure to note proper hole alignment. The vinyl sheet is cut so that only one side lines up correctly with the holes in the panel.
- Flip the whole thing over, so that now the logo is facing the table and the vinyl is between you and the plate as pictured.
- Place the Inner Face Plate on TOP of the vinyl sheet, above the Outer Face Plate as pictured. The vinyl should now be sandwiched between the two panels.
- ⓘ Seal Kit: Follow the same steps as above, but note that the seal kit inner face plate extends past the top of the outer face plate.

Step 3 — Fastening the Face Plates



- Standard Kit: Insert Three , **14mm** bolts through the smaller holes. They should be inserted from the front (panel with logo) to the back. The Pan heads of the bolts should be on the logo side.
- Seal Kit: Place two, **14mm** bolts in the end holes of the faces. Leave the center hole open.
- Cap off each bolt on the back side with a Nylock nut.
- Using the included allen wrench and 3D Printed nut driver, tighten down the bolts and nuts. Do not tighten them completely just yet.
- Last Pic is of Seal Kit version.

Step 4 — Installing 3D Printed Strike Plate (Seal Kit)



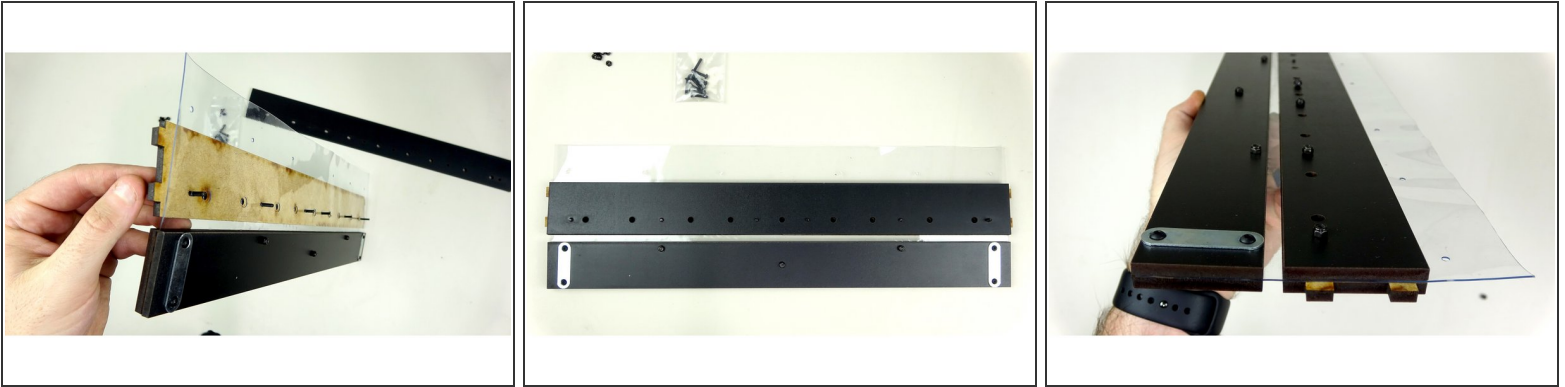
- Clean out the char of the laser routed spot on the inner face plate.
- Place the 3D Printed Strike plate into the cutout.
- ① You may need to slightly trim the strike plate to get it to recess fully.
- Use a 16mm bolt and nylock to secure the strike plate to the other two panels. Nylock goes on the side with the strike plate.

Step 5 — Attaching the Metal Maglatch Plates



- i** The rest of this stage shows the standard kit, but the steps pertain to both the standard kit and the sealed kit.
- Insert 4 rivnuts (silver tubes in fastener bag) into the large four holes on the ends of the Face Plates. They should be inserted so the flanged part rests against the FRONT panel.
 - Secure the Metal Maglatch plates, one on each side, to the Back Face Plate using four, **10mm** bolts.
 - The bolts should go through the Maglatch plate, through the Back Face Plate, through the vinyl, and grab the rivnuts on the other side.

Step 6 — Attaching the Inner and Outer Exit Plates



- With everything face down (logo down), place the Outer Exit Plate (the one WITH tabs) under the vinyl sheet as pictured.
 - Insert six, **14mm** bolts through the plate and through the vinyl sheet.
 - Place the Inner Exit Plate on top of the vinyl, being careful to line up the bolts with the holes as pictured.
 - Secure the plates using 6 nylock nuts. Do not tighten completely yet.
- i** Check your work: The Maglock plates should be on the opposite side of the Repkord logo. The Exit plate with the tabs should be on the SAME side as the logo. The Exit plate without the tabs should be on the same side as the Maglock plates. If everything looks good, hit that link in the last step to go to the next Stage!

Step 7 — Seal Kit Finished Front Panel assembly



- If you have the seal kit, quickly check your work against the picture.
- [If everything looks good, click here to head over to the next Stage!](#)